

Electronics 1: Chapter 3 figs

Alan Robert Clark

April 19, 2022

Note that the source code for the figs can be seen by clicking the pic. You will need to use your Browser's BACK button to return to this page.

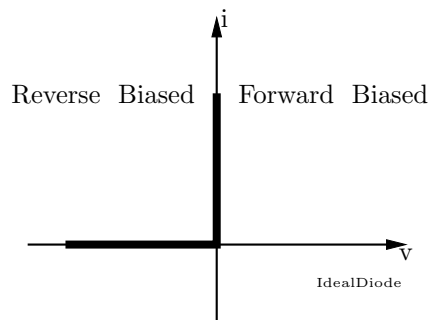


Figure 1: The $i-v$ characteristic of the Ideal Diode

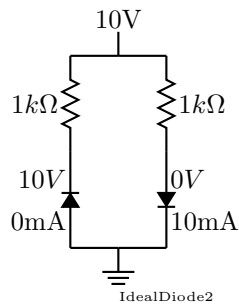


Figure 2: The symbol, and the circuit characteristics

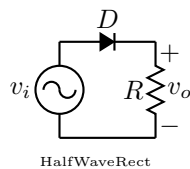


Figure 3: HalfWaveRectifier

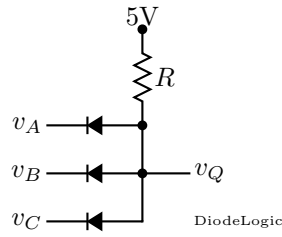


Figure 4: Simple Diode based AND gate logic.

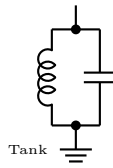


Figure 5: "Tank" circuit, used in RF tuners. The Cap is usually

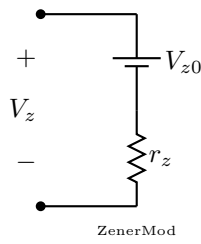


Figure 6: A simple model of a Zener Diode.

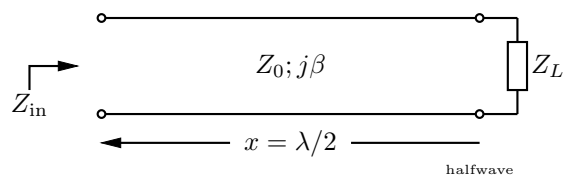


Figure 7: A Half Wave Rectifier

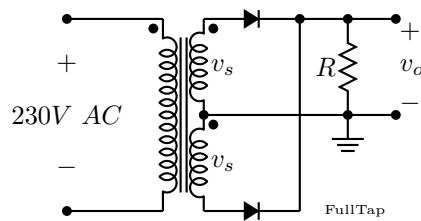


Figure 8: Full-wave, centre tapped

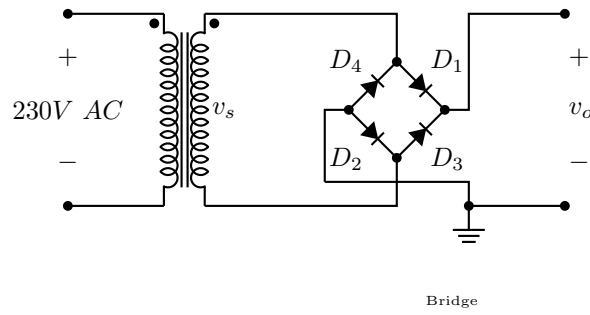


Figure 9: A Single-ended Bridge rectifier.

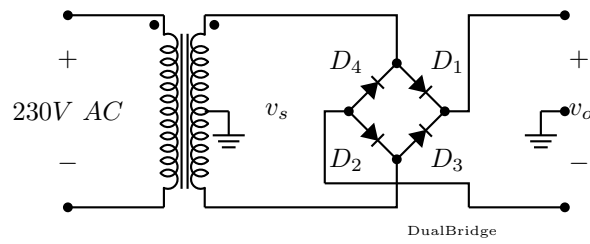


Figure 10: Dual-ended Bridge supply.

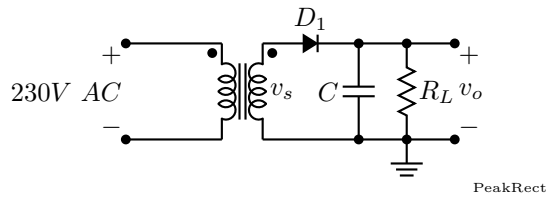


Figure 11: A simple Peak Rectifier

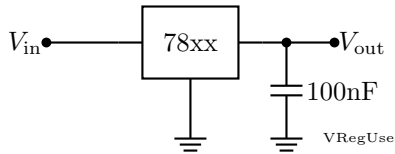


Figure 12: The Use of three-terminal fixed POSITIVE regulators.

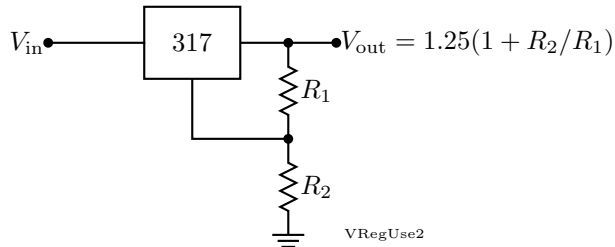


Figure 13: An adjustable three-terminal regulator.

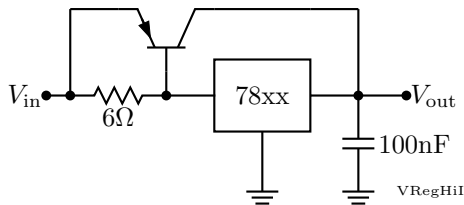


Figure 14: Higher Current capabilities

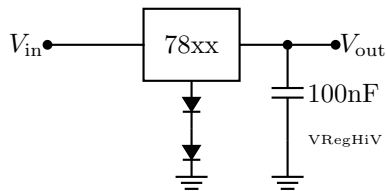


Figure 15: Higher Voltage capabilities

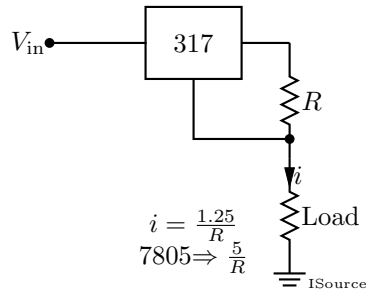


Figure 16: Current Sources

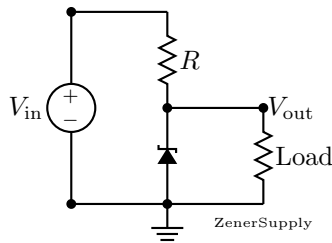


Figure 17: Using a Zener as a Voltage Regulator

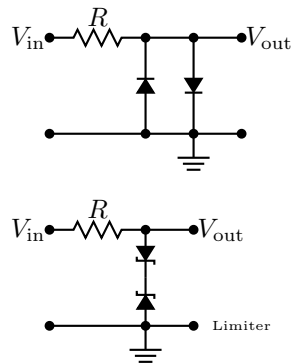


Figure 18: Basic Limiter circuit

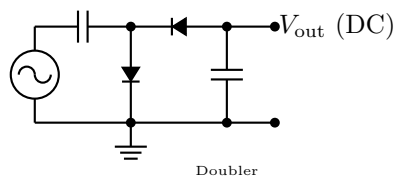


Figure 19: A Voltage Doubling Circuit